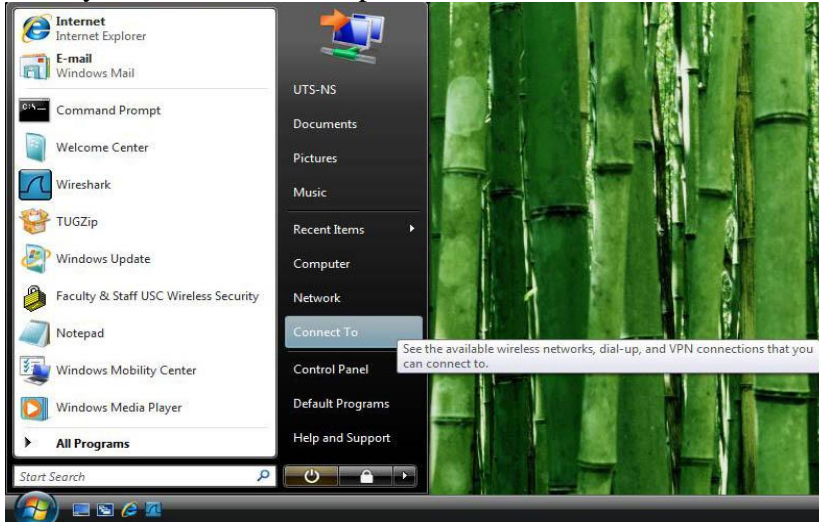


Windows Vista Wireless Instructions

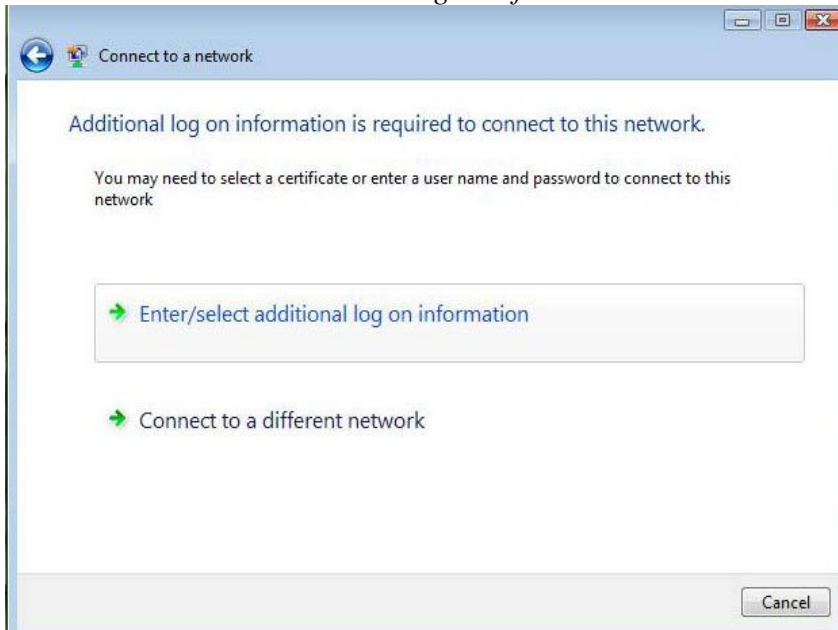
1. From your Windows start option, choose *Connect To* from the start screen.



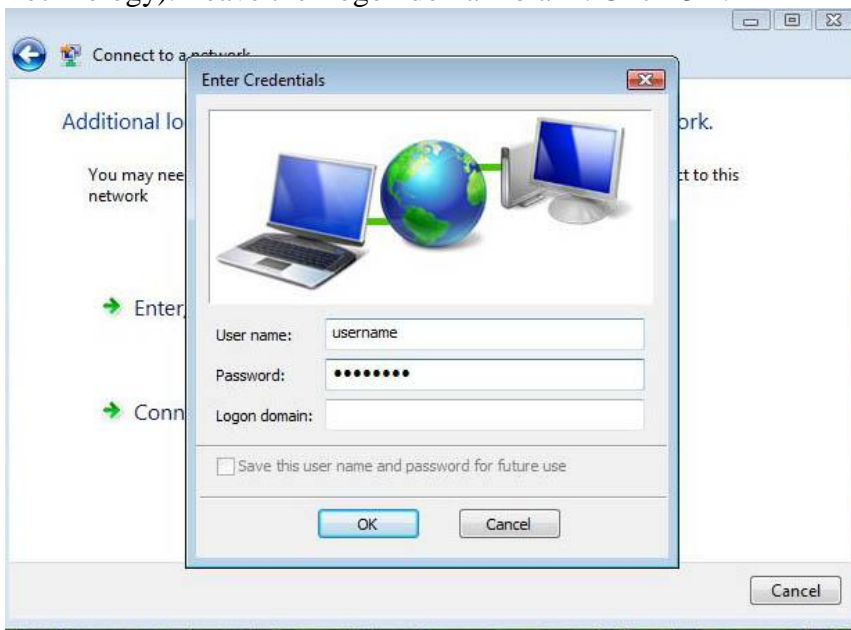
2. For students, choose **uscstudent** as the network to connect. Click *Connect*.



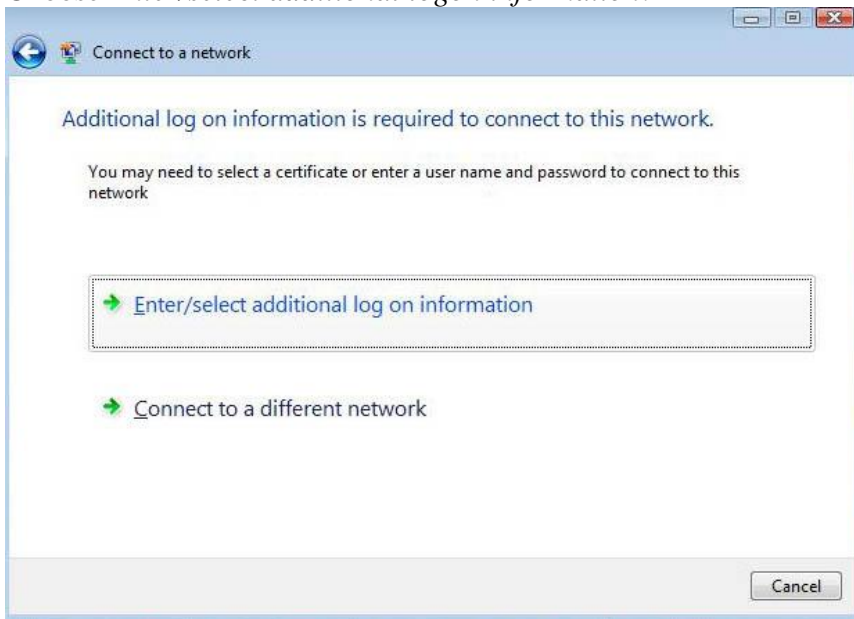
3. Choose *Enter/select additional logon information*.



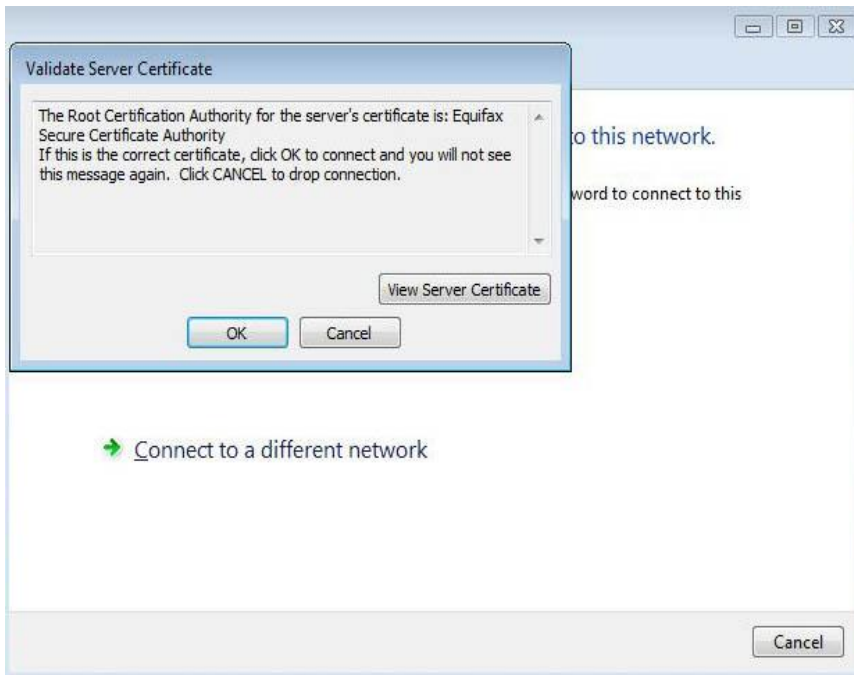
4. Use your University network username and password. (This can be found on [VIP](#) under Technology). Leave the Logon domain blank. Click *OK*.



5. Choose *Enter/select additional logon information*.

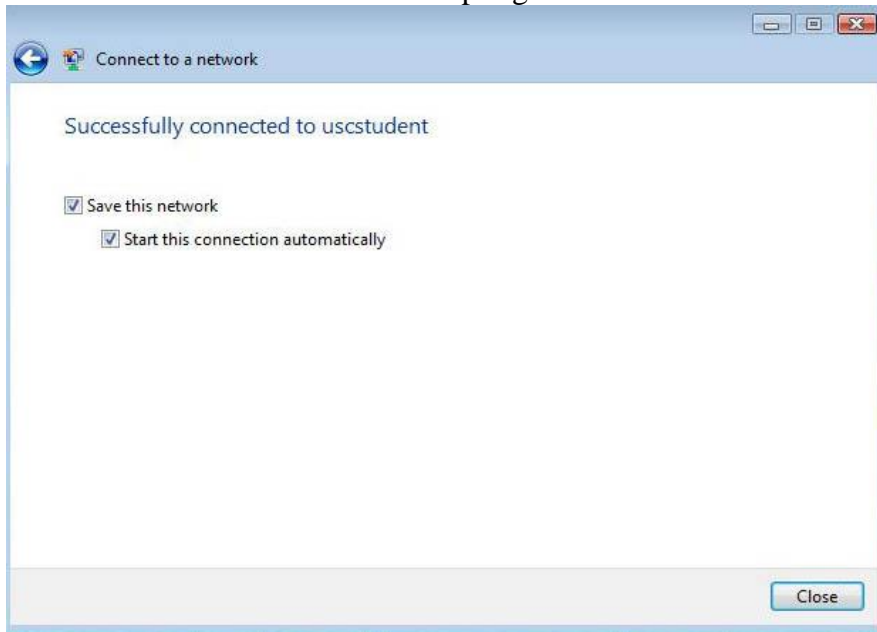


6. You will be asked to “Validate Server Certificate”. Click *OK*.



7. When presented with the “*Successfully connected to uscstudent*” screen, please check the boxes for “*Save this network*” and “*Start this connection automatically*”. This will save your settings for the University wireless network.

You should not have to do these steps again.



8. After setting up your computer to recognize USC wireless, please open a webpage. You will be asked to login with your USC network username and password. You will be asked to review the USC Network Usage Policy. After review, click on the link that says, *Yes, I will install the policy key and accept the terms and conditions for Internet use*. If you choose not to accept the policy, you will not be granted Internet access.
9. The policy key will begin downloading. Select Install to complete the policy key installation. When the installation is complete, you will receive a prompt indicating a successful installation. You are now connected to the USC wireless network!