

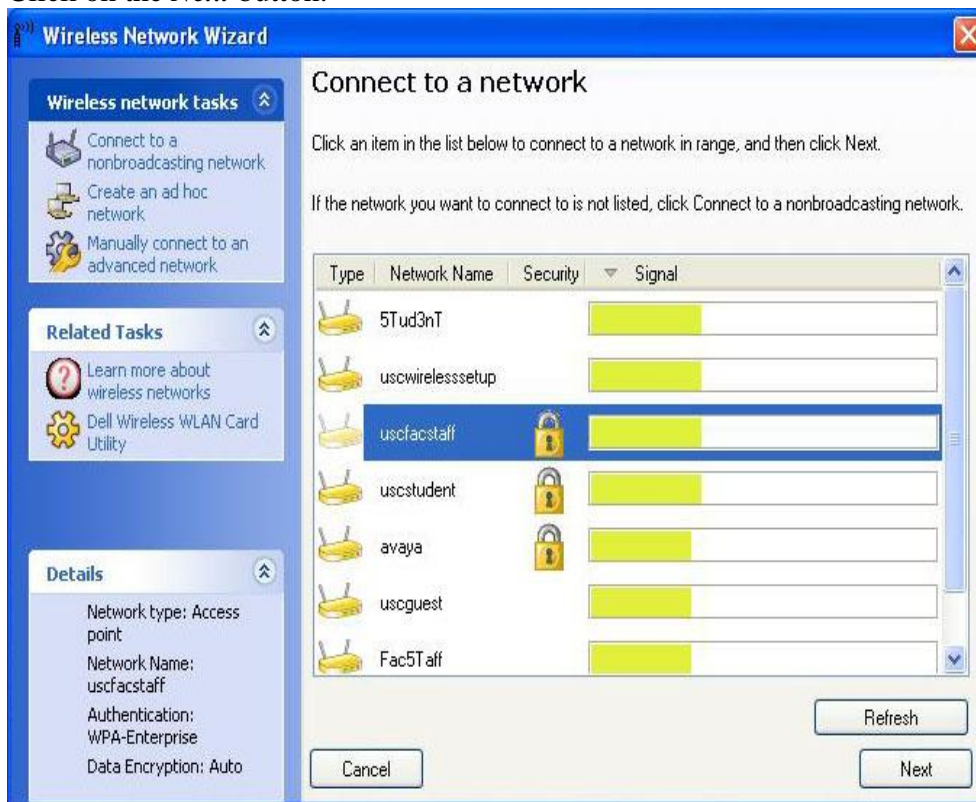
## Windows XP: Using the Dell Wireless Utility Wireless Instructions

*These instructions are for people that use the Dell wireless utility to manage their wireless connections. These are not instructions for using the Windows wireless management utility.*

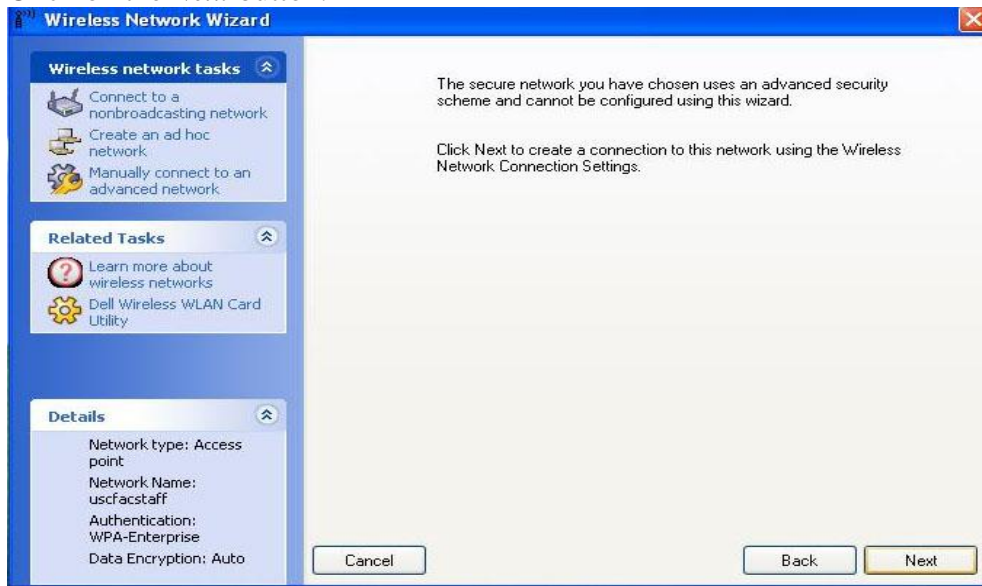
1. If you are using the Dell utility to manage your wireless connection, right-click on your Intel wireless icon in your system tray.



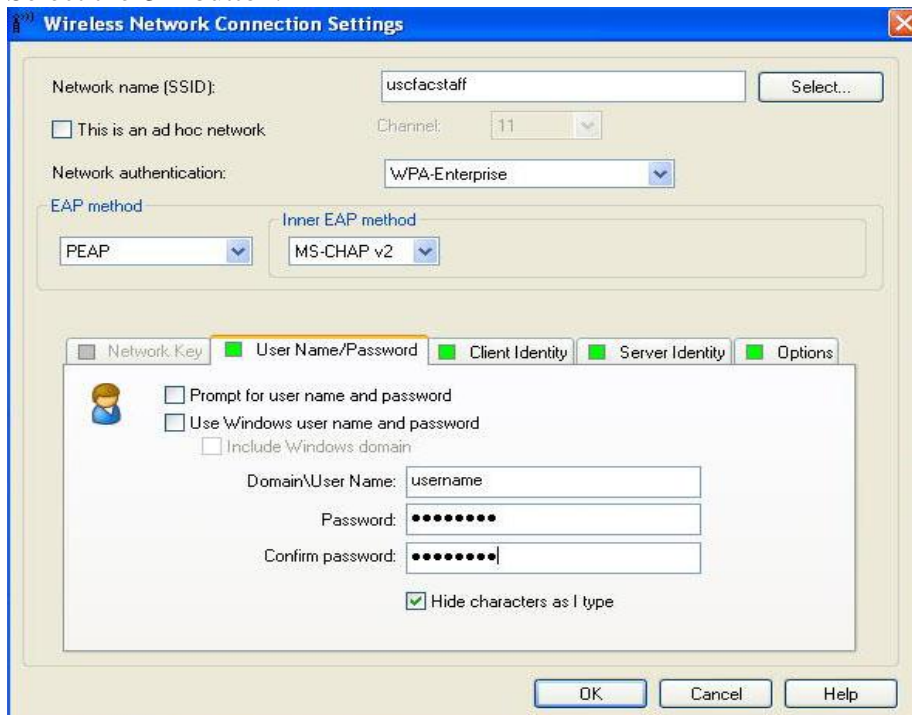
2. Choose **uscstudent** if you are a student. Choose **uscfacstaff** if you are a faculty or staff.
3. Click on the *Next* button.



4. Click on the *Next* button.



5. Underneath the EAP method, choose **PEAP** in the dropdown menu.
6. Click the User Name/Password tab.
7. Make sure there is a check next to *Hide characters as I type*.
8. Enter your network username and password. Confirm your password.
9. Select the *OK* button.



10. You are now connected to the wireless network.
11. After setting up your computer to recognize USC wireless, please open a webpage. You will be asked to login with your USC network username and password. You will be asked to review the USC Network Usage Policy. After review, click on the link that says, *Yes, I will install the policy key and accept the terms and conditions for Internet use*. If you choose not to accept the policy, you will not be granted Internet access.
12. The policy key will begin downloading. Select *Install* to complete the policy key installation. When the installation is complete, you will receive a prompt indicating a successful installation. You are now connected to the USC wireless network!