

Windows XP: Using the Intel Wireless Utility Wireless Instructions

These instructions are for people that use the Intel wireless utility to manage their wireless connections. These are not instructions for using the Windows wireless management utility.

1. If you are using the Intel utility to manage your wireless connection, right-click on your Intel wireless icon in your system tray.
2. Choose *Configure WiFi*.

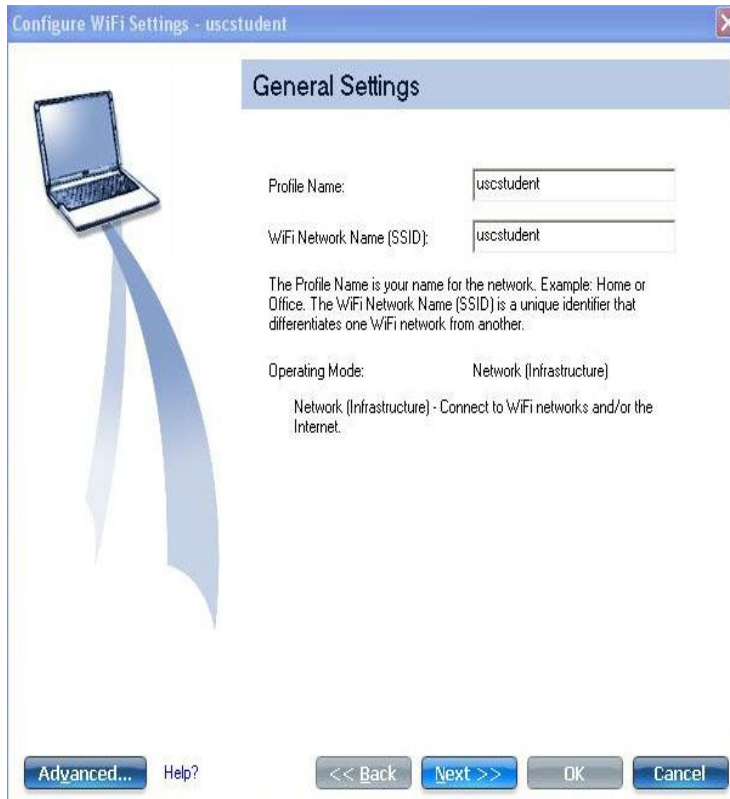


3. Choose “uscstudent”
4. Click on the Connect button.



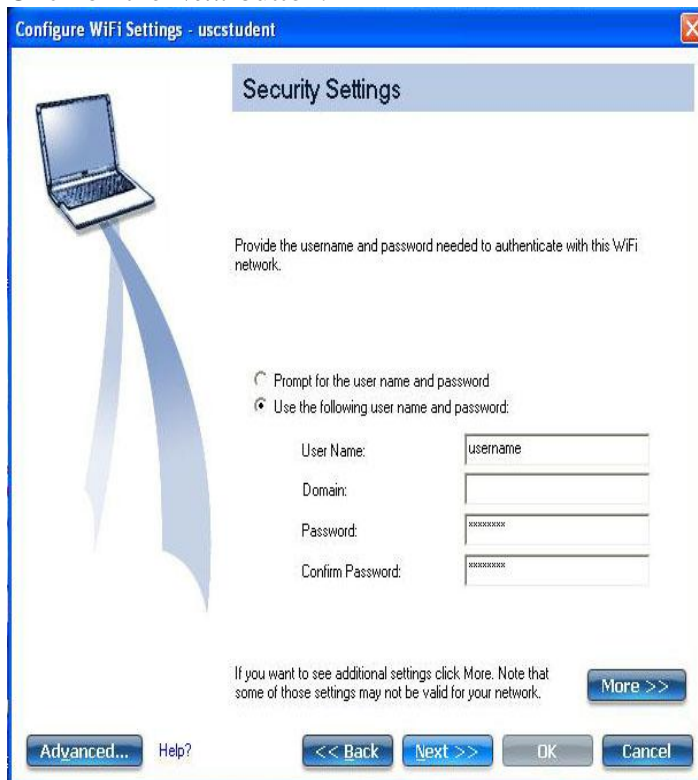
5. You should see the network name (uscstudent) in both the Profile Name and WiFi Network Name (SSID)

6. Click on the *Next* button.



7. Make sure the radio button is checked for Use the following username and password.
*** If this screen does not come up, you may have an older Intel utility. You can either update your Intel utility to the latest version or manually change the settings. On the screen that pops up, you will need to manually change the setting to PEAP from the dropdown menu. Also select MS-CHAP-v2. Select OK.*
8. Enter your network username.
9. Leave Domain blank.
10. Enter your network username password and confirm your password.

11. Click on the *Next* button.



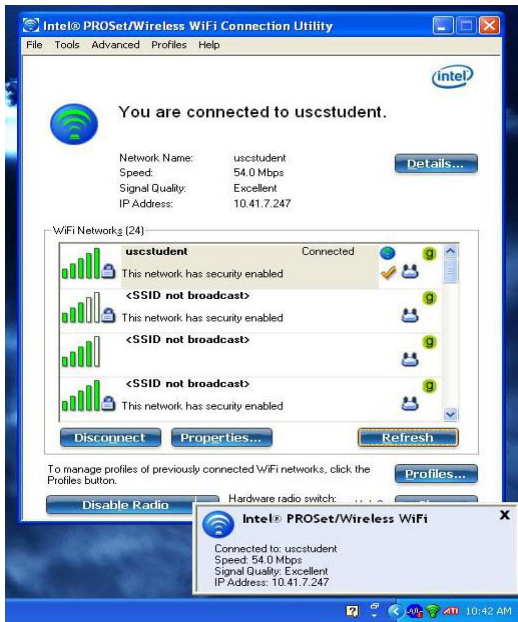
The screenshot shows a Windows-style dialog box titled "Configure WiFi Settings - uscstudent". The main heading is "Security Settings". On the left, there is an illustration of a laptop with a blue ribbon pointing towards the "Next >>" button. The text reads: "Provide the username and password needed to authenticate with this WiFi network." There are two radio button options: "Prompt for the user name and password" (unselected) and "Use the following user name and password:" (selected). Below these are four input fields: "User Name" (containing "username"), "Domain" (empty), "Password" (containing "*****"), and "Confirm Password" (containing "*****"). A "More >>" button is located below the input fields. At the bottom, there are buttons for "Advanced...", "Help?", "<< Back", "Next >>", "OK", and "Cancel".

12. Click OK.



The screenshot shows the same dialog box, now on the "Configured" page. The heading is "Configured". The text reads: "The WiFi settings have been configured for this WiFi network. Click OK to connect to this WiFi network." On the left, the laptop illustration has a blue ribbon pointing towards the "OK" button. At the bottom, the "OK" button is highlighted with a yellow border, indicating it is the intended action.

13. You are now connected to the wireless network.



14. After setting up your computer to recognize USC wireless, please open a webpage. You will be asked to login with your USC network username and password. You will be asked to review the USC Network Usage Policy. After review, click on the link that says, *Yes, I will install the policy key and accept the terms and conditions for Internet use*. If you choose not to accept the policy, you will not be granted Internet access.
15. The policy key will begin downloading. Select Install to complete the policy key installation. When the installation is complete, you will receive a prompt indicating a successful installation. You are now connected to the USC wireless network!