

Windows XP-Windows Wi-Fi manager Wireless Instructions

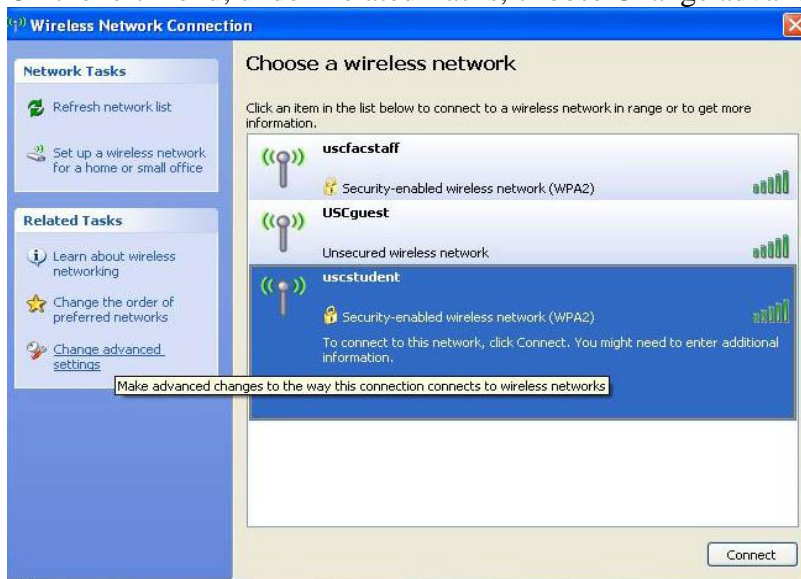
For Windows XP users, please make sure you have XP Service Pack 3 and/or the WPA2 hotfix installed. This hotfix is included in SP3 and is needed to recognize the WPA2 wireless option. For Windows XP - 64bit, Service Pack 2 must be installed, as there is no standalone WPA2 hotfix available.

To check if your computer is running SP3, go to Start - My Computer. Right click and choose Properties. You will see the latest Service Pack version in the System information.

1. From your Windows menu bar, look in your system tray on the bottom right of your screen. Right-click on your wireless icon. Choose View Available Wireless Networks.



2. If you are in a wireless zone, make sure you can see entries for **uscstudent**. **(Do not click on the Connect button)**
3. On the left menu, under Related Tasks, choose Change advanced settings.

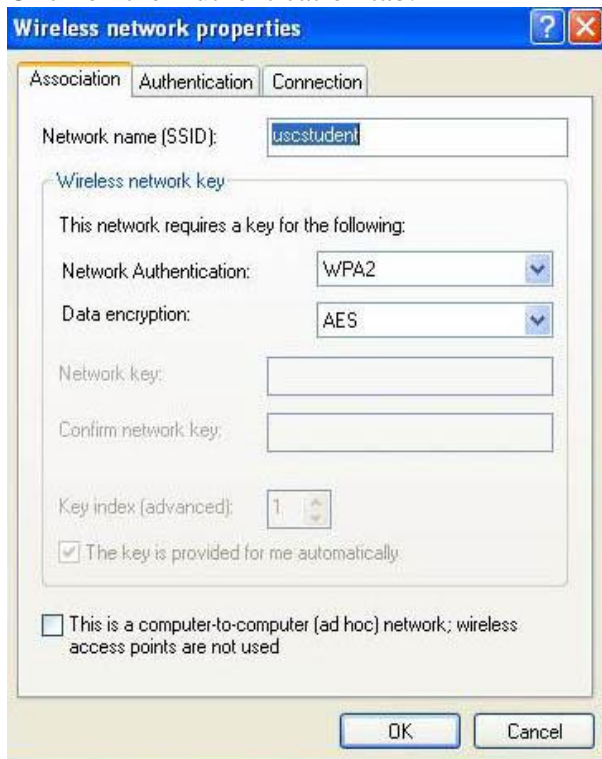


4. Click on the Wireless Networks tab.
5. Make sure the box is checked for Use Windows to configure my wireless network settings.

6. Click the Add button.

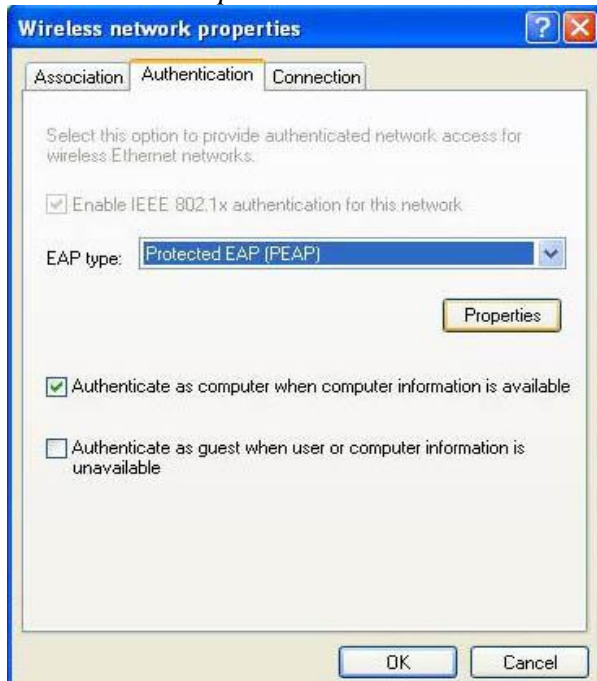


7. On the Association tab, enter the network name (SSID) as **uscstudent** if you are a student or **uscstaff** if you are faculty/staff.
8. Choose *WPA2* on the drop down area of Network Authentication.
9. Choose *AES* as your Data encryption. Leave the bottom box unchecked.
10. Click on the Authentication tab.



11. Under the EAP type drop down area, choose *Protected EAP (PEAP)*. Check the box that says *Authenticate as computer when computer information is available*.

12. Click on the *Properties* button.



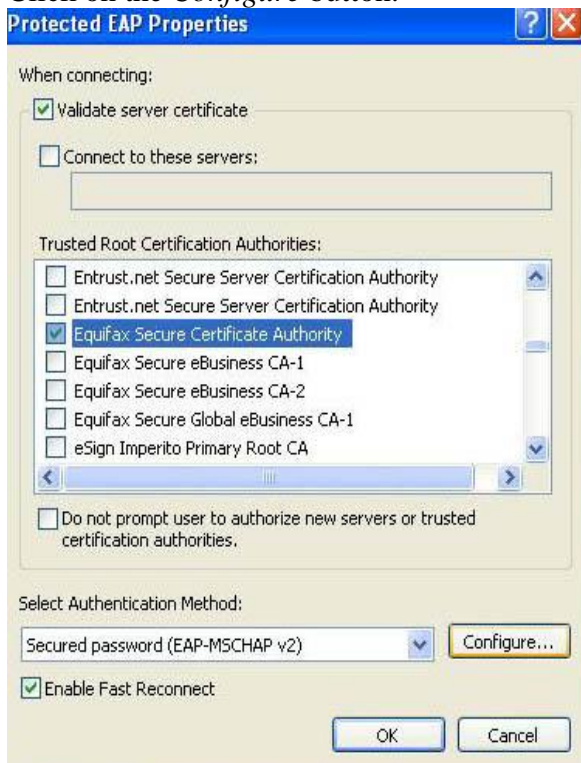
13. Check the box that says *Validate server certificate*.

14. Scroll down in the Trusted Root Certification Authorities area and select *Equifax Secure Certificate Authority*.

15. Under Select Authentication Method, choose *Secured password (EAP-MSCHAP v2)*

16. Check the box that says *Enable Fast Reconnect*.

17. Click on the *Configure* button.



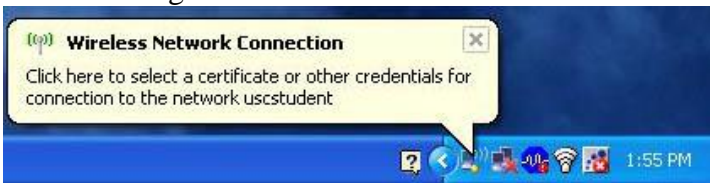
18. Uncheck the box that says Automatically use my Windows logon name and password (and domain if any).

19. Click OK.

20. Click OK on the previous screens to continue. (Protected EAP properties â€œ OK, Wireless Network Properties â€œ OK)



21. You will see a message pop up that indicates your Wireless Network Connection. Click on the message box.



22. Use your University network username and password. (This can be found on [VIP](#) under Technology). Leave the Logon domain blank. Click OK.
23. You may see a screen for Validate Server Certificate. Choose OK to continue.



24. After setting up your computer to recognize USC wireless, please open a webpage. You will be asked to login with your USC network username and password. You will be asked to review the USC Network Usage Policy. After review, click on the link that says, *Yes, I will install the policy key and accept the terms and conditions for Internet use.* If you choose not to accept the policy, you will not be granted Internet access.
25. The policy key will begin downloading. Select Install to complete the policy key installation. When the installation is complete, you will receive a prompt indicating a successful installation. You are now connected to the USC wireless network!